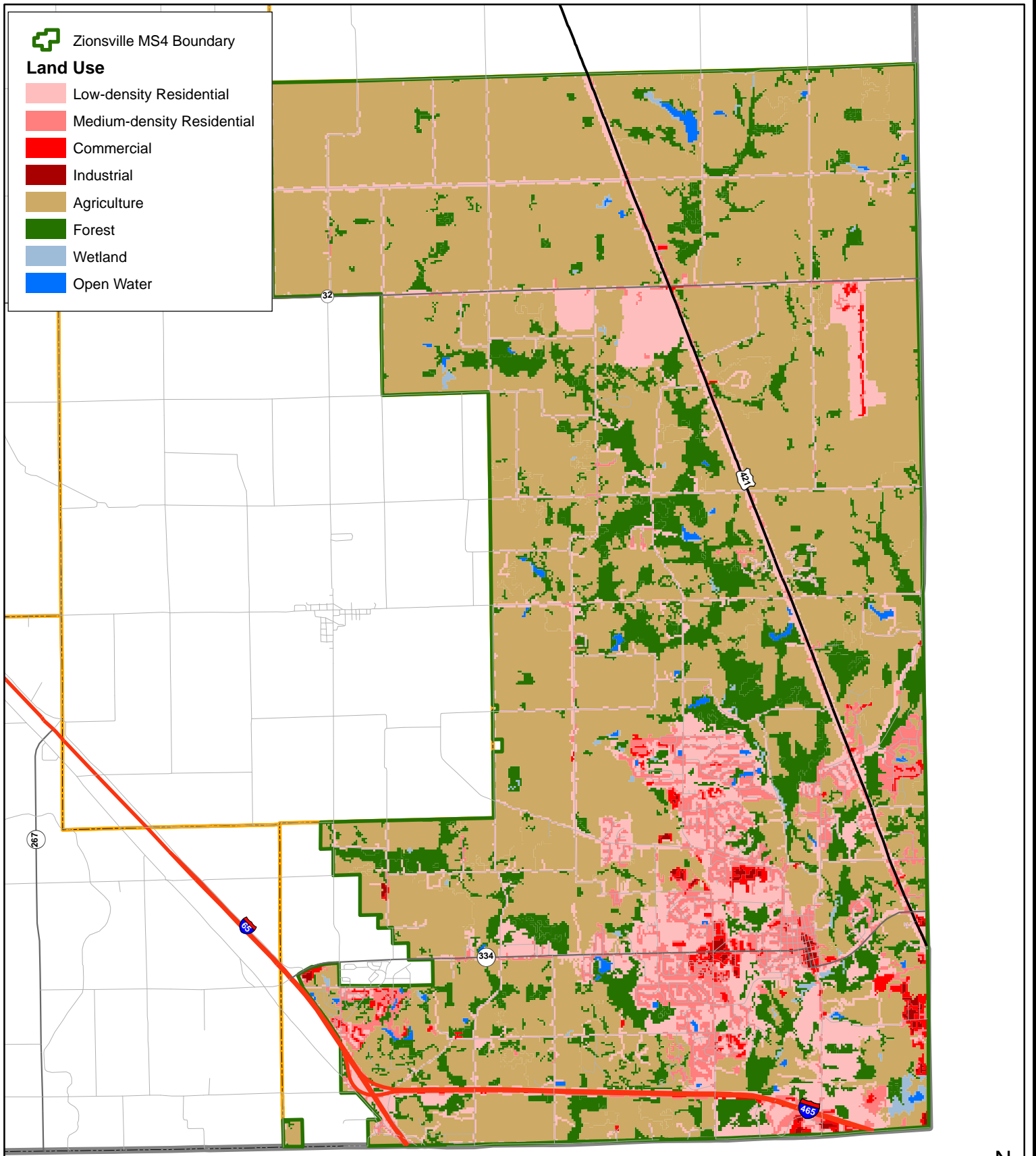




Zionsville MS4 Boundary

Land Use

- Low-density Residential
- Medium-density Residential
- Commercial
- Industrial
- Agriculture
- Forest
- Wetland
- Open Water



Data Sources:

1. Land Use: National Land Cover Dataset, 2001
2. Zionsville Street Department, 2010



Christopher B. Burke Engineering, Ltd.

National City Center, Suite 1368 South
 115 West Washington Street
 Indianapolis, Indiana 46204
 (t) 317.266.8000 (f) 317.632.3306

PROJECT:

**ZIONSVILLE
 SWQMP PARTS B AND C**

PROJECT NO.

07-0235

APPROX. SCALE

n.t.s.

TITLE:

LAND USE

DATE: **10/2010**

EXHIBIT **3**